

GENERAL INFORMATION INESFLY AFRICA

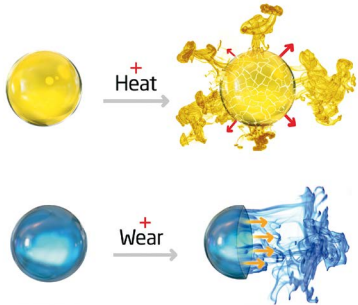
Proven Technology

Inesfly Insecticide Paint uses a proven technology and has been on the market for more than 15 years. Inesfly Insecticide Paint is already being used in different countries worldwide, such as Brazil, Benin, Ivory Coast, Ghana, Spain, China, Bolivia, Germany, Nigeria, Mexico and many other countries. The Inesfly Insecticide paint's efficacy results have been published in the Malaria Journal in 2010.

Working Mechanism

Inesfly Insecticide Paint uses a new technology based on micro-encapsulation. This technology:

- Allows the insecticides to be released in a gradual and slow manner.
- Contains three active ingredients, thereby tackling the resistance of some insects to certain insecticides.
- Attacks the full life cycle of the insect, from the egg, larvae, to the adult stage, due to the Insect Growth Regulators (IGR);
- Protects the active ingredients against external factors such as weather and wear.



Safety

Inesfly Insecticide Paint is, when used according to the application manual, not harmful to human beings and pets. This is due to the low concentration of active ingredients (insecticide and IGR), the controlled and gradual release of the active ingredients and the low frequency of application compared to residual spraying.

Evaluation

Inesfly Insecticide Paint will treat your environment for two years. For the best result, Inesfly Africa recommends - besides using the paint (indoors and outdoors) - to clean your environment and clear areas sensitive for insect breeding. After two years we recommend to paint the surface again to make sure you secure the best effect for your home and work environment.

Inesfly Africa in Ghana

Inesfly products are tested and approved by the Environmental Protection Agency (EPA), Ghana Standards Authority (GSA) and the Food and Drugs Authority (FDA).

Inesfly products are always produced with the highest quality of raw materials and are being produced in our new state of the art production facility in Accra.

MANUFACTURED AND DISTRIBUTED BY

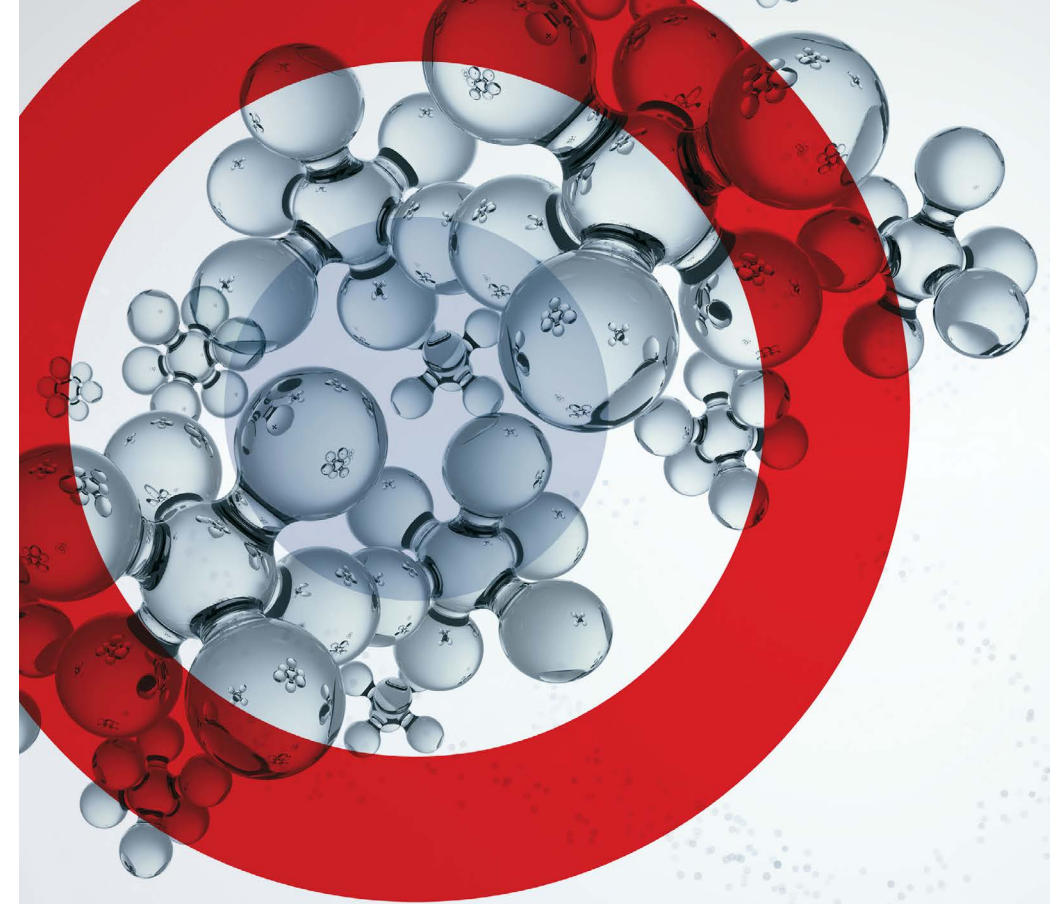
Tel +233 302 228 422

Plot #10 Adjuma Crescent South Industrial Area,
STC Lane, Accra

P. o. Box KN 5574, Accra,
Ghana, Africa

Email info@inesflyafrica.com

www.inesflyafrica.com



if Inesfly®
Africa

Application Manual



APPLICATION MANUAL

INESFLY INSECTICIDE PAINT



OVERVIEW

Inesfly is more than a paint, it is a treatment that focuses on African health issues, such as Malaria and Dengue.

Inesfly Insecticide Paint will drastically reduce the amount of insects, such as mosquitoes, cockroaches and ants in your direct surroundings for 2 years! This will immediately improve your living conditions as well as your health conditions.

Inesfly Insecticide Paint gives the best result when the entire surface is being painted and insects have no place to hide. Therefore, it is recommended to apply Inesfly Insecticide Paint both indoors and outdoors.

In order to secure the best effect, this document will provide you with the necessary information to apply Inesfly Insecticide Paint in the correct manner.

Inesfly Africa produces two types of paint: 5A IGR NG Interior paint and 5A IGR exterior paint. The norms and recommendations for these two paints are the same.

PREPARATION OF SURFACE

- Before applying Inesfly Insecticide paint, remove loose or flaking material. Make sure the surface is clean (no dirt, dust or grease). This is necessary to secure a good adhesion of the paint to the surface.
- If the surface is dirty, you may wipe it by using water and detergent.
- After cleaning, make sure the surface is dry before applying Inesfly Insecticide Paint.

APPLICATION OF INESFLY INSECTICIDE PAINT

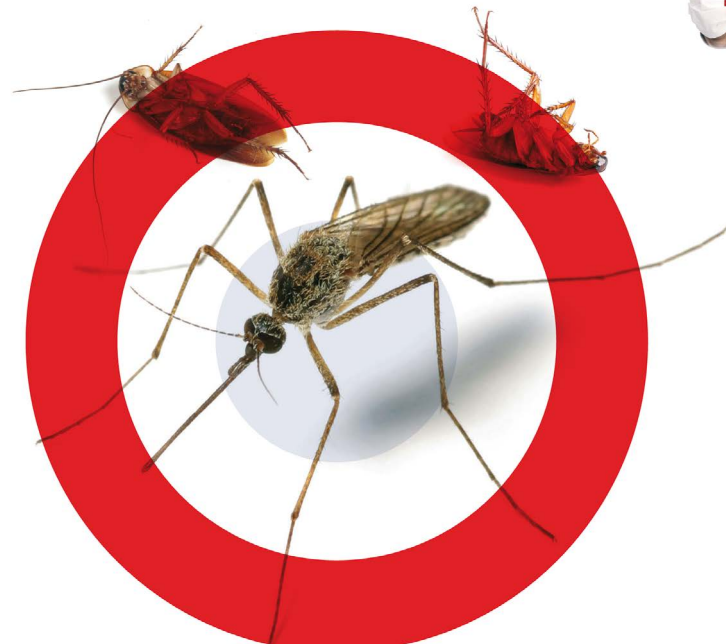
Inesfly Insecticide paint comes in 10 litre buckets. Each bucket has a volume of 13 litres, this is to simplify the dilution process. Stir well to ensure the paint is completely mixed.

- **Smooth surfaces:** When Inesfly Insecticide paint is applied to a smooth surface, like cement walls or metal, conventional painting methods are recommended such as the use of a brush or roller.
- **Rough surfaces:** In the case of rough surfaces, such as mud, plaster or clay, Inesfly Insecticide paint can be best applied by using a manual or electrical spraying machine.
- The **coverage** and the **dilution** of the paint depends on the type of surface. The following table describes which application method to use, the dosage, the dilution and how many layers of Inesfly Insecticide paint is advised to apply.

Surface	Application method	Dosage/yield	Dilution	Layers
Painted Cement	Brush, roller	1lt/10-12m ²	10%	1
Non Painted Cement	Brush, roller	1lt/6-8m ²	1st layer 50% 2nd layer 10%	2 2
Stucco and Mud	Manual sprayer, airless	1lt/6-8m ²	Sprayer: 40% Airless: pure	2 1
Wood	Brush, roller	1lt/6-8m ²	10%	1
Metallic *	Airless	1lt/10-12m ²	Pure	1

* On metallic surfaces it is recommended to apply an anti-corrosive primer first.

After painting, we recommend not to sleep, sit or work in the room for 24/48 hours. The room will have a lemon scent after application, it will fully disappear after a few days. This scent is not harmful to humans or pets.



SAFETY PRECAUTIONS

- Make sure there is sufficient ventilation.
- Avoid direct contact with the skin.
- The use of protective clothing, gloves, mask and protective glasses are advised.



APPLICATION METHODS

- Brush - Roller - Sprayer



HYGIENE MEASURES

- Do not ingest the paint.
- Keep the paint separate from food and drinks.
- Do not smoke close to the paint or just painted areas.
- After painting wash hands, clothes and gloves.