

Controlling Vectors in the New Millennium

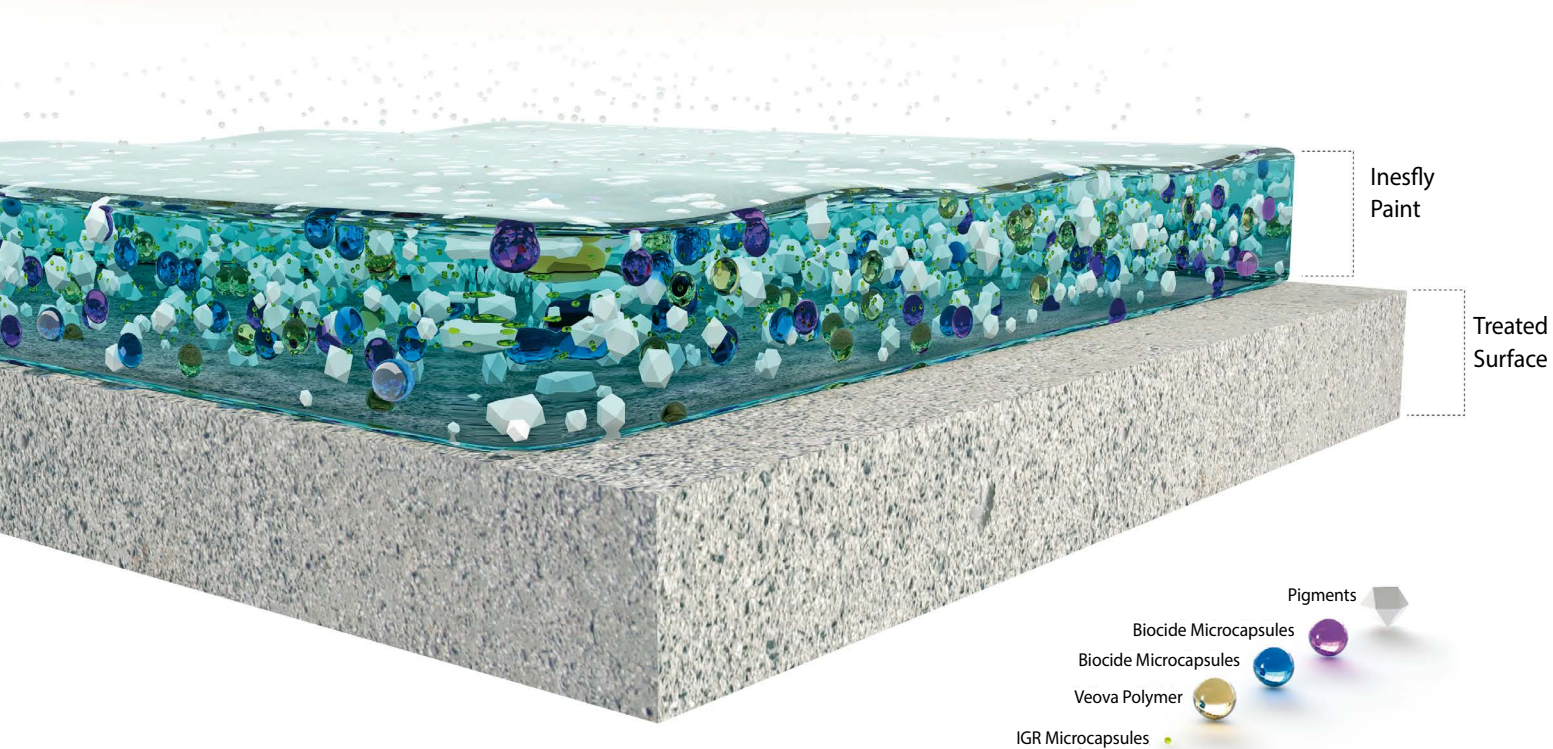
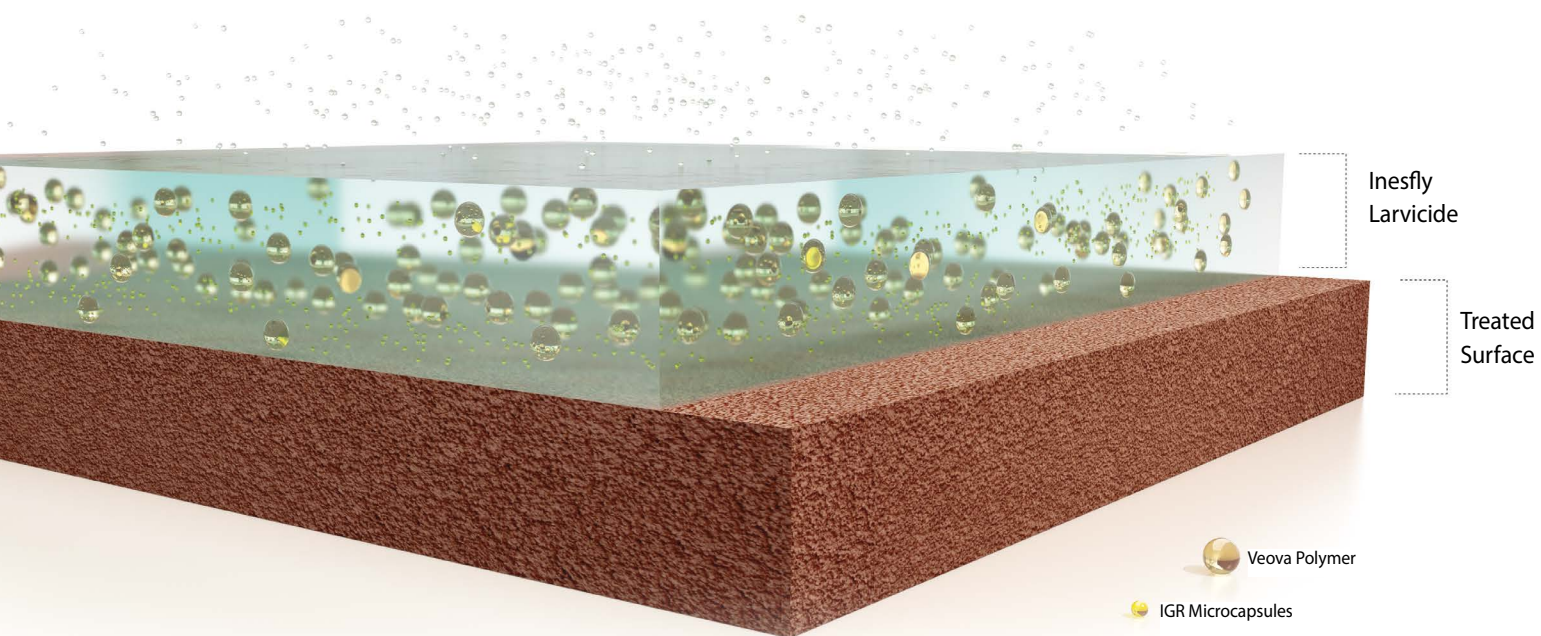
Integrated Control of Pests

Multi-sector Application

Public Health, Veterinary Health,
Personal Care & Ornamental Crops

Product Catalogues

Central America, South America, Africa & Asia



OUR TECHNOLOGY

Inesfly technology has made it possible to combine a variety of types of active ingredients (natural products, biocides etc.) in a polymer microcapsule. This ensures their controlled release, improves their duration and makes it easier to use them to control pests and vectors in our surroundings.

SPECIFIC PROPERTIES

- Prolonged efficacy and duration
- Harmless to humans and animals
- Published scientific trials
- Proprietary method of application
- Resistant to alkalinity, UV radiation and temperature.
- Reduced treatment costs
- Low toxicity, greater duration.

INESFLY products are the result of a long process of research and development. The studies and projects carried out have demonstrated its efficacy in controlling various pests and vectors which transmit endemic diseases. These efficacy studies have been

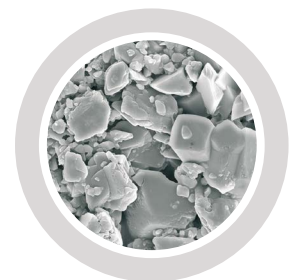
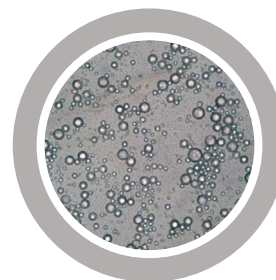
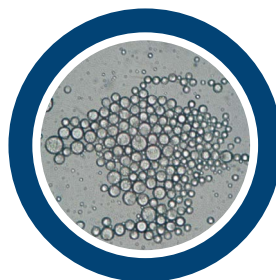
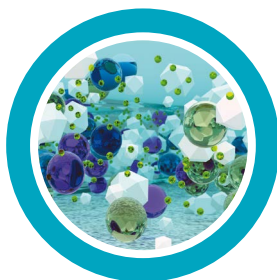
performed in accordance with international protocols and by the world's foremost centres and experts in the field of Health.

INESFLY technology, patented in 53 countries worldwide, is used in various fields including public health, animal health, agriculture and ornamental plants.

The INESFLY microcapsule is formulated in a chemical process that produces microcapsules in suspension which include low-dosage biocides regulating insect growth. The type of polymer and the coating of the microcapsule together ensure the gradual, controlled release of the active ingredients.

We believe in health projects based on three main pillars:

1. • Control of vectors
2. • Clinical diagnosis and treatment
3. • Education on Hygiene and Health



INESFLY AFRICA



INESFLY AFRICA HE-2P

Human and Environmental Double Protection

This system has been designed for the protection of people in open spaces and for the conservation of the environment, especially aquatic wildlife.

When someone is in an outdoor risk area, exposed to insect bites, it is necessary to protect the entire body, both skin and clothes. The best way is to use repellents and insecticides, using products that are not harmful to humans or the environment.

Most textiles contain pyrethroids, including everyday items (*shirts, trousers etc*) and also mosquito nets, some of which are already impregnated or specially prepared for impregnation.

Although these products are not harmful to humans, they are highly toxic for aquatic wildlife, especially fish. Inesfly Africa is aware that you cannot solve one problem by creating another, and that human safety is the priority. It has therefore come up with the Inesfly HE-2P system: a double system protecting both people and the environment.

For personal protection: combining products to apply to the skin (*INESFLY BODY LOTION, INESFLY BODY WIPE, BODY SANITISING REPELLENT WITH ALOE VERA*) with others to apply to clothes (*INESFLY EM HOUSE* to impregnate any type of fabric by spraying or soaking).

These products are intended for people (*both civilians and military*) who are in high-risk areas and who need total protection through fabric impregnation.

For the protection of the environment and aquatic wildlife: BIODET, a clothes detergent that can immediately deactivate pyrethroids by washing.

INESFLY AFRICA HEH-3P

Home, Environmental and Human Triple Protection

This system has been designed for the total protection of humans in their homes and surrounding areas, or in any other type of enclosed spaces, in a considered way, whilst also protecting the environment.

Arthropods have a biological cycle which means they can only be controlled through an integrated treatment approach. And therefore Inesfly Africa developed the “Inesfly HEH-3P” system which controls arthropods at every stage of their biological cycle, from the laying of eggs in water or humid areas, like mosquitoes, or in dry areas, like bed bugs, right up to adulthood, whilst also protecting the environment.

Homes and any other kind of buildings can be protected by applying INESFLY 5A IGR NG and INESFLY 5A IGR paints. Which paint to use will depend on the populations of vectors resistant to pyrethroids in the area of application. However, these products do not leach, so they do not contaminate the soil. Equally, the insecticides



become degraded as they break through the microcapsule and penetrate the coating layer, making them non-harmful to people and the environment alike.

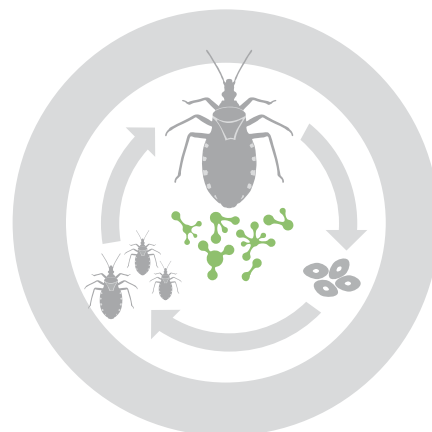
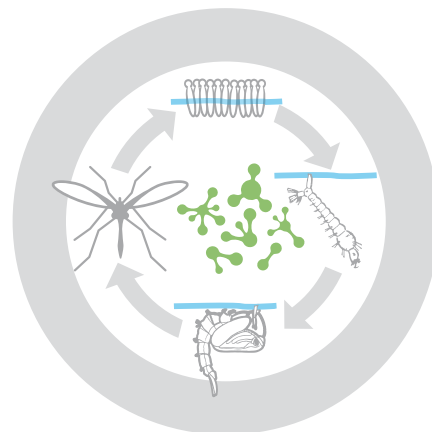
In outdoor areas, larvae can be targeted by applying formulated larvicides recommended by the WHO (*INESFLY LARVAE 0.5G*, *INESFLY LARVAE 1G* and *INESFLY LARVA IGR*) in drinking water, in standing water and in organic material (*INESFLY LARVAE 25WP*).

INESFLY EM HOUSE FLOOR CLEANER is used as a maintenance product for public institutions and warehouses. Conversely, INESFLY EM HOUSE IGR NG can also be applied by spaying on textiles or any other surface that requires treatment.

INESFLY IN THE CONTROL OF ENDEMIC DISEASES

Malaria, dengue fever, Chagas disease, leishmaniasis, African trypanosomiasis, West Nile virus

Endemic diseases affect half of the worldwide population. Our technology is effective for the control of vectors that transmit the above diseases. Many efficacy studies have been performed in accordance with international protocols and by the world's foremost centres and experts in the field of Health. The scientific publications resulting from these studies have proven the efficacy of INESFLY formulations and this has become one of our distinguishing features from other products and brands.



INTEGRAL SOLUTIONS FOR VECTOR CONTROL



INESFLY INSECT LIFE CYCLE CONTROL

INESFLY formulations control the pest's complete life cycle as they are effective against eggs, larvae and adults. This is the only way insect populations can be kept under control.

INESFLY SOLUTIONS: drinking water larvicides, standing water larvicides, ground larvicides, paints and transparent coatings.

INESFLY BUILDINGS VACCINE

Humans, pets and livestock spend much of their life inside buildings such as houses, workplaces and farms. If there are pests and vectors of endemic diseases in these places, it represents a high risk to human and animal health.

INESFLY SOLUTIONS: paints, transparent coatings and floor cleaner.

INESFLY FOR VECTORS OF ENDEMIC DISEASES

The best way to reduce the likelihood of contracting a vector-borne disease is to reduce the populations of vectors.

INESFLY SOLUTIONS: drinking water larvicides, standing water larvicides, paints and transparent coatings.

INESFLY FOR PERSONAL PROTECTION

Protecting people from insect bites is a further preventive measure to avoid contracting endemic vector-borne diseases. Other harmful insects, such as lice, have made a rapid resurgence in recent years, so effective solutions are needed to control them.

INESFLY SOLUTIONS: insecticide repellents, pediculicide soap.

INESFLY TO CONTROL URBAN PESTS

Urban pests are growing in every city where appropriate control measures are not taken and if they are not effective. If these insects are in the streets, they can eventually infest homes and other private and public buildings.

INESFLY SOLUTIONS: paints, transparent coatings and floor cleaner.

INESFLY TO CONTROL LIVESTOCK PESTS

In livestock farms, such as poultry, diseases transmitted by insects not only affect animal welfare but production too, and so they represent a serious problem.

Appropriate pest control can improve both productivity and product quality alike.

INESFLY SOLUTIONS: paints, transparent coatings and floor cleaner.

INESFLY IN TEXTILES

Textiles are one of the most common and abundant materials in the world with many different uses in our daily lives. Insects can use textiles as a medium for hiding, resting, feeding, etc. However, textiles can also protect us from insect bites.

INESFLY SOLUTIONS: transparent coatings.

INESFLY TO CONTROL ORNAMENTAL PLANT PESTS

Private and public gardens and also ornamental plant nurseries can be affected by insect pests causing damage to valuable species. If left uncontrolled, these pests can spread rapidly and pose a major financial and environmental problem.

INESFLY SOLUTIONS: transparent coating.

INESFLY IN PREVENTING ENVIRONMENTAL CONTAMINATION

Insecticidal pyrethroids are highly toxic to the aquatic environment, even at very low concentrations. Textiles impregnated with insecticides continuously release these during washing and contaminate water. Water containing these substances has an effect on fish and aquatic invertebrates.

INESFLY SOLUTIONS: Pyrethroid-deactivating detergent.

PUBLIC HEALTH



INESFLY 5A IGR NG

DESCRIPTION

Inesfly 5A IGR NG paint enables the control of all arthropods and pests, especially to control vectors that transmit endemic diseases including malaria, dengue fever, Chagas disease, leishmaniasis etc.

Highly effective for all kinds of insects: mosquitoes, flies, cockroaches, bed bugs, fleas, ticks, spiders, scorpions, ants and mites.

It can be used anywhere there is a substantial infestation of insects, including: *Inside and outside homes, offices, health centres, hospitals, schools, hotels* etc.

COMPOSITION

Alpha-cypermethrin	0.7%
d-Allethrin.....	1.0%
Pyriproxyfen.....	0.063%

USES

Easy to use as a standard water-based paint, and can be applied with a brush, a roller or an air-powered or airless sprayer. The applicable dosage can vary between 1 lt/6 m² and 1 lt/12 m², depending on the type of surface, the type of pest and the severity of the infestation.

For best results, apply INESFLY PAINTS on the largest surface area possible to avoid creating “safe havens” for pests.

PRESENTATIONS

1 litre, 5 litres and 10 litres



INESFLY 5A IGR

DESCRIPTION

Inesfly 5A IGR paint is highly effective on all kinds of insects: mosquitoes, flies, cockroaches, bed bugs, fleas, ticks, spiders, scorpions, ants and mites.

Allows the control of all kinds of arthropods and pests, and in particular to control vectors that transmit endemic diseases including malaria, dengue fever, Chagas disease, leishmaniasis etc.

Inesfly 5A IGR paint is specially recommended for areas with pyrethroid-resistance problems.

Product is exclusively for professional use.

COMPOSITION

Chlorpyrifos	1.5%
Diazinon	1.5%
Pyriproxyfen	0.063%

USES

Easy to use as a standard water-based paint, and can be applied with a brush, a roller or an air-powered or airless sprayer. The applicable dosage can vary between 1 lt/6 m² and 1 lt/12 m², depending on the type of surface, the type of pest and the severity of the infestation.

For best results, apply INESFLY PAINTS on the largest surface area possible to avoid creating “safe havens” for pests.

PRESENTATIONS

1 litre, 5 litres and 10 litres



INESFLY EM HOUSE IGR NG

DESCRIPTION

INESFLY EM HOUSE IGR NG is a ready-to-use, water-based transparent biopolymer coating that contains suspended biopolymer microcapsules which serve as insecticides, acaricides and insect growth regulators.

Highly effective at controlling all kinds of arthropods. Can be used wherever paint cannot be applied.

Can be applied to fabrics: Product is specially designed to protect personal fabrics in environments with high infestations of disease-transmitting vectors.

Product supplied to NATO - No. 9484B

COMPOSITION

Alpha-cypermethrin	0.3%
d-Allethrin.....	0.3%
Pyriproxyfen.....	0.063%

USES

Product is ready to use. Apply directly to any surface you wish to treat. Can be applied using an air-powered sprayer. Spray around 50 ml of the product per m² (a 5 lt sprayer can treat a 100 m² surface area).

Recommended for spraying fabrics including clothing, awnings etc.

Spray from a distance of 15 cm and leave to dry for 3-4 hours. Reapply after every wash.

PRESENTATIONS

100 ml, 200 ml, 500 ml, 1 lt, 5 lt and 10 lt



INESFLY LARVAE 1G

DESCRIPTION

INESFLY LARVAE 1G is an organophosphate insecticide/ larvicide, specifically designed for the larvae of various types of mosquitoes, including: *Anopheles*, *Culex*, *Aedes*, *Mansonia*, black fly (*Simulium*).

INESFLY LARVAE 1G is a safe product which can be used in drinking water to control mosquito larvae. It is recommended by the World Health Organization (WHO) for this purpose.

COMPOSITION

Temefos	1.0%
---------------	------

USES

Manual application by water-soluble bags. If product is in bulk, apply granules using motorised equipment or apply manually using a dispenser.

Drinking-water containers: 20 g per 200 lt of water, equivalent to 1 ppm of AI.

PRESENTATIONS

20 g water-soluble bag. Box of 10 bags.
 20 g water-soluble bag. Box of 50 bags.
 25 kg plastic sack.



INESFLY LARVAE 0.5G

DESCRIPTION

INESFLY LARVAE 0.5G is an insecticide/larvicide growth regulator, specifically designed for larvae of various types of mosquitoes, including: *Anopheles*, *Culex*, *Aedes*, *Mansonia* and black fly (*Simulium*) which are vectors for diseases including malaria, dengue fever, filariasis and yellow fever.

Recommended by the WHO.

Can be used in drinking water to control mosquito larvae. (WHO/SDE/WSH/03.04/113).

COMPOSITION

Pyriproxyfen 0.5%

USES

Apply water-soluble bags manually or, if product is in bulk, apply granules using motorised equipment or apply manually using a dispenser. Drinking-water containers: 2-10 g per m³ of water.

PRESENTATIONS

10 g water-soluble bag. Box of 10 bags.
10 g water-soluble bag. Box of 50 bags.
25 kg plastic sack.



INESFLY LARVA IGR

DESCRIPTION

Inesfly Larva IGR is an insecticide/larvicide growth regulator, specially designed for larvae of various types of mosquitoes.

This product is designed for use in non-drinking water including shallow ponds, pools of standing water, sumps, drainage pipes in urban areas, troughs, water in tyres etc.

COMPOSITION

Pyriproxyfen 0.2%

USES

Product is ready to use. Apply directly to the surface you wish to treat. Can be applied using spray gun or air-powered sprayer.

Dosage: 1 lt/15 m².

PRESENTATIONS

100 ml, 500 ml and 5 lt



INESFLY SP COATING

DESCRIPTION

INESFLY COATING is a water-based biopolymer coating containing suspended insecticide, acaricide and growth-regulating microcapsules. The product has a very high duration and is ideal for use in hard-to-reach places that cannot be painted.

Highly effective for all kinds of insects, including: *mosquitoes, flies, cockroaches, bed bugs, fleas, ticks, spiders, scorpions, ants and mites.*

COMPOSITION

Alpha-cypermethrin	0.7%
d-Allethrin.....	1.0%
Pyriproxyfen.....	0.063%

USES

Dosage: 1 lt/1 m².

For best results, apply this product on the largest surface area possible to avoid creating “safe havens” for pests.

Means of application: brush, roller, air-powered/airless sprayer, depending on the surface to be treated.

PRESENTATIONS

400 ml and 5 lt



INESFLY EM HOUSE FLOOR CLEANER

FLOOR CLEANER

DESCRIPTION

Inesfly EM House Floor Cleaner is a floor cleaner which has been designed to eliminate all kinds of dirt, especially grease. Its neutral pH means it can be used on any kind of floor.

Its composition ensures a low level of foaming when used in sweepers. It has a pleasant scent.

It is effective against all kinds of crawling arthropods including cockroaches, silverfish, ants, mites, spiders and scorpions.

COMPOSITION

Alpha-cypermethrin 0.25%
d-Allethrin..... 0.25%
Pyriproxyfen 0.050%
Mixture of non-ionic surfactants.

USES

Industrial floors and surfaces, farms, shops and homes. Places which need to be kept very clean and protected from crawling insects: warehouses, storerooms, terraces, basements, wine cellars, larders, food storage areas, kitchens, etc.

Dilute the product to 1% in water for normal levels of dirt, for use in sweepers and for manual use with a mop. Do not rinse.

PRESENTATIONS

1 lt and 5 lt



INESFLY BIODET

ENVIRONMENTAL PROTECTION

DESCRIPTION

INESFLY BIODET is a detergent for coloured textiles which deactivates substances including pyrethroids which can be harmful to aquatic environments. It has the dual effect of effective cleansing and elimination of toxins from waste water.

Clothing and other fabrics that have been impregnated or sprayed with insecticides and repellents of this type release these substances when they are washed, contaminating waste water with these toxic components which have a serious impact on fish and marine life.

COMPOSITION

Mixture of anionic and non-ionic surfactants with basic substances and absorbent materials.

USES

Product ready for use after simple dilution. It can be used in washing machines with any water type or washing temperature. Dosage varies according to the amount of soiling.

Low: 5-10 ml/kg of fabric

Medium: 10-15 ml/kg of fabric

High: 15-30 ml/kg of fabric

PRESENTATIONS

1 lt and 5 lt

LIVESTOCK - POULTRY



INESFLY 5A IGR PAINT IGR NG

DESCRIPTION

There is always a constant presence of pests in places used for accommodation, breeding and transportation of animals. These are places which offer the ideal conditions for their proliferation: plenty of food, the correct temperature, perfect humidity and substandard levels of hygiene.

INESFLY 5 A IGR NG PAINT can control pests of all kinds, such as bird mites, fleas, ticks, dung beetles, ants, flies, sandflies, etc in these kinds of places, such as farms, stables, kennels and dog houses, zoological centres and animal transportation vehicles.

COMPOSITION

Alpha-cypermethrin	0.7%
d-Allethrin.....	1.0%
Pyriproxyfen	0.063%

USES

Easy to use as a standard water-based paint, and can be applied with a brush, a roller or an air-powered or airless sprayer.

The applicable dosage can vary between 1 lt/6 m² and 1 lt/12 m², depending on the type of surface, the type of pest and the severity of the infestation.

PRESENTATIONS

1 litre, 5 litres and 10 litres



INESFLY EM HOUSE IGR NG

DESCRIPTION

INESFLY EM HOUSE IGR NG is a ready-to-use, water-based transparent biopolymer coating that contains suspended biopolymer microcapsules which serve as insecticides, acaricides and insect growth regulators.

INESFLY EM HOUSE IGR NG can control pests of all kinds, such as bird mites, fleas, ticks, dung beetles, ants, flies, sandflies, etc in these kinds of places, such as farms, stables, kennels and dog houses, zoological centres and animal transportation vehicles.

COMPOSITION

Alpha-cypermethrin	0.7%
d-Allethrin.....	1.0%
Pyriproxyfen	0.063%

USES

Product is ready to use. Apply directly to any surface you wish to treat. Can be applied with a spray gun, an air-powered sprayer or a spray.

Dosage to apply: 50 ml /m².

PRESENTATIONS

1 litre, 5 litres and 10 litres



INESFLY 5A IGR PAINT

DESCRIPTION

INESFLY 5A IGR PAINT can control pests of all kinds, such as bird mites, fleas, ticks, dung beetles, ants, flies, sandflies, etc in these kinds of places, such as farms, stables, kennels and dog houses, zoological centres and animal transportation vehicles.

It is especially recommended for areas of pyrethroid resistance.

For professional use only.

COMPOSITION

Chlorpyrifos	
Diazinon	1.5%
Pyriproxyfen 0.063%	1.5%

USES

Easy to use as a standard water-based paint, and can be applied with a brush, a roller or an air-powered or airless sprayer. The applicable dosage can vary between 1 lt/6 m² and 1 lt/12 m², depending on the type of surface, the type of pest and the severity of the infestation. For best results, apply INESFLY PAINTS on the largest surface area possible to avoid creating "safe havens" for pests.

PRESENTATIONS

1 litre, 5 litres and 10 litres



INESFLY LARVAE 2.5 WP

DESCRIPTION

INESFLY LARVAE 25 WP contains triflumuron, which inhibits chitin synthesis, and interrupts the insect life cycle during moulting, which occurs in the following larval stage and therefore stops the insect from reaching adulthood. For control of flies and creeping insects in stables. Recommended for controlling larvae of insects such as: common house fly (*Musca domestica*), stable fly (*Stomoxys calcitrans*), lesser house fly (*Fannia canicularis*), fruit fly (*Drosophila spp.*) and larvae of creeping insects such as dung beetles (*Alphitobius diaperinus*) in chicken coops, stables and pigsties.

COMPOSITION

Triflumuron.....	25%
------------------	-----

USES

When treating for the first time, use 20 grams diluted into 10 l of water for each 10m².

When treating liquid organic matter (e.g. in pigsties), treat with 8 g per m³ of liquid each day.

To control dung beetles, use 200 g in 20 l of water for each 100 m².

PRESENTATIONS

200 g aluminium bags. 20 bags per box.
500 g aluminium bags. 10 bags per box.

PERSONAL PROTECTION



INESFLY BODY

DESCRIPTION

INESFLY BODY repels flies and mosquitoes, providing over 6 hours of protection.

COMPOSITION

Pyrethrum extract.
Piperonyl butoxide.
Citral. d-Limonene. Geraniol.

USES

Apply and spread thoroughly over all areas of skin exposed to bites. No need for frequent or repeated application.

Do not use on children under 2 years.

PRESENTATIONS

100 ml bottle.



INESFLY BODY WIPES

DESCRIPTION

INESFLY BODY WIPES repel flies and mosquitoes, providing over 6 hours of protection.

COMPOSITION

Pyrethrum extract.
Piperonyl butoxide.
Citral. d-Limonene. Geraniol.

USES

Apply and spread thoroughly over all areas of skin exposed to bites. No need for frequent or repeated application.

Do not use on children under 2 years.

PRESENTATIONS

Wipes in individual sachets (box of 10).



INESFLY BODY REPELLENT

SANITISING REPELLENT WITH ALOE VERA

DESCRIPTION

INESFLY INSECT SANITISING REPELLENT is a mosquito-repellent gel with aloe vera extract which offers excellent protection for over 6 hours. Formulated with aloe, it has a moisturising effect, unlike other repellents on the market which dry the skin.

INESFLY INSECT SANITISING REPELLENT does three things: *repels, sanitises and moisturises.*

COMPOSITION

Pyrethrum extract.
Piperonyl butoxide.
Aloe Vera.
Citral. d-Limonene. Geraniol.

USES

Apply and spread thoroughly over all areas of skin exposed to bites. No need for frequent or repeated application.

Do not use on children under 2 years.

PRESENTATIONS

Individual sachets containing 7 ml of product. Box of 10



INEX PEDICULICIDE SOAP

DESCRIPTION

INEX Pediculicide Soap is a lice treatment product, with a saporified olive oil-based formula incorporating microcapsules of tea tree essential oil (*Melaleuca alternifolia*) in a very low concentration to serve as a natural repellent. It has a purely mechanical action: by applying a film which seals the breathing holes (respiratory spiracles) of the lice, causing them to suffocate and die.

COMPOSITION

Olive oil	33.3%
Tea tree essential oil	0.015%

USES

Apply approximately 40 ml of INEX Pediculicide Soap all over the hair and massage until the scalp is thoroughly covered. Leave to work for 30 minutes. After 30 minutes, rinse the product out using water. There is no need to also use shampoo or conditioner.

PRESENTATIONS

100 ml dispenser bottle + skullcap + knit comb

ALLERGIES





INESFLY 5A PAINT IGR NG

DESCRIPTION

Inesfly 5A IGR NG paint is highly effective against all kinds of allergy-causing arthropods such as: dust mites, mosquitoes, flies, cockroaches, silverfish and ants.

COMPOSITION

Alpha-cypermethrin	0.7%
d-Allethrin.....	1.0%
Pyriproxyfen	0.063%

USES

Easy to use as a standard water-based paint, and can be applied with a brush, a roller or an air-powered or airless sprayer. The applicable dosage can vary between 1 lt/6 m² and 1 lt/12 m², depending on the type of surface, the type of pest and the severity of the infestation.

For best results, apply INESFLY PAINTS on the largest surface area possible to avoid creating “safe havens” for pests.

PRESENTATIONS

1 litre.
Also available as allergy kits.



INESFLY EM HOUSE IGR NG

DESCRIPTION

Inesfly's innovative polymeric microcapsule-based technology ensures that insecticides and IGRs are released slowly, giving the product high persistence and very low toxicity and preventing microcapsules from interacting. Allows the control of all kinds of arthropods, and allergy transmitters in particular, such as: *dust mites, cockroaches, silverfish and so on.*

COMPOSITION

Alpha-cypermethrin	0.3%
d-Allethrin.....	0.3%
Pyriproxyfen	0.063%

USES

Product is ready to use. Apply directly to any surface you wish to treat.

Can be applied to fabrics: Can be applied to any problematic area, such as carpets, rugs, curtains, bedspreads etc.

It is recommended to spray from a distance of 15 cm and leave to dry for 3-4 hours.

PRESENTATIONS

100 ml and 500 ml.
Also available as allergy kits.

ORNAMENTAL PLANTS



INESPALM

DESCRIPTION

INESPALM COATING allows the control of all kinds of arthropods and pests in ornamental plants. In particular, it prevents weevil attacks on palms.

COMPOSITION

Deltamethrin0.5%

USES

Easy to use as a standard water-based paint, becoming transparent once dried.













For preventative control of weevils, apply to the cutting area and the bud directly after pruning. To control ants, apply a 20 cm band around the base of the tree.

Apply a later of INESPALM diluted to 10% in water using any of the following application methods: brush, roller, spray gun or airless spraying equipment.










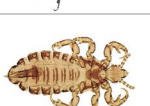
PRESENTATIONS

400 ml and 5 lt

CONTROL OF VECTORS

		INESFLY 5A IGR NG PAINT	INESFLY 5A IGR PAINT	INESFLY EM HOUSE IGR NG	INESFLY SP	INESFLY EM HOUSE FLOOR CLEANER (MOP)	INESFLY LARVA IGR	INESFLY BODY	INESFLY SANITISING INSECT REPELLENT	INESFLY LARVAE 0.5G	INESFLY LARVAE 1G	INEX PEDICULICIDE	INESFLY BIODET	INESPALM
COCKROACHES <i>Periplaneta americana</i> <i>Blattella orientalis</i> <i>Blattella germanica</i>		●		●	●	●								
MOSQUITOES (adults) <i>Anopheles gambiae</i> <i>Aedes aegypti</i> <i>Aedes albopictus</i> <i>Culex quiquefasciatus</i> <i>Culex pipiens</i>		●	●	●	●		●	●						
MOSQUITOES (larvae) <i>Anopheles gambiae</i> <i>Aedes aegypti</i> <i>Aedes albopictus</i> <i>Culex quiquefasciatus</i> <i>Culex pipiens</i>						●			●	●				
TRIATOMINE BUGS <i>Triatoma infestans</i> <i>Triatoma dimidiata</i> <i>Rhodnius prolixus</i>		●	●	●	●									
BED BUGS <i>Cimex lectularius</i>		●		●	●									
ANTS <i>Lasius grandis</i> <i>Linepithema humile</i>		●		●	●	●								
COMMON HOUSE FLY (larvae) <i>Musca domestica</i>										●				
COMMON HOUSE FLY (adults) <i>Musca domestica</i>		●		●	●									
SANDFLIES <i>Phlebotomus</i> spp. <i>Lutzomyia</i> spp.		●	●	●	●		●	●						
TSETSE FLIES <i>Glossina morsitans</i> <i>Glossina palpalis</i>		●	●	●	●		●	●						
FLEAS <i>Ctenocephalides</i> spp. <i>Pulex irritans</i> . <i>Xenopsylla cheopis</i>		●		●	●	●								
SCOPRIONS <i>Centruroides</i> spp. <i>Buthus</i> spp. <i>Diplocentrus</i> spp.		●		●	●									

- Public Health
- Cattle and Poultry
- Ornamental
- Personal Protection
- Environmental Protection

			INESFLY 5A IGR NG PAINT	INESFLY 5A IGR PAINT	INESFLY EM HOUSE IGR NG	INESFLY SP	INESFLY EM HOUSE IGR NG	INESFLY LARVA IGR	INESFLY BODY	INESFLY SANITISING INSECT REPELLENT	INESFLY LARVAE 0.5G	INESFLY LARVAE 1G	INEX PEDICULICIDE	INESFLY BIODET	INESPALM
SPIDERS		<i>Latrodectus spp.</i> / <i>Lycosa spp.</i> / <i>Mygale spp.</i> <i>Amblyoceraem spp.</i> / <i>Harpactira spp.</i>	●		●	●									
DUST MITES		<i>Dermatophagoides farinae</i>	●		●	●	●								
SILVERFISH		<i>Lepisma saccharina</i> / <i>Thermobia domestica</i>	●		●	●	●								
TICKS		<i>Rhipicephalus spp.</i> / <i>Amblyomma spp.</i> <i>Ixodes spp.</i>	●	●	●	●			●	●					
Ceratopogonidae (biting midges)		<i>Culicoides spp.</i>	●	●	●	●									
RED POULTRY MITES		<i>Dermanyssus gallinae</i>	●	●	●	●									
STABLE FLIES (adults)		<i>Stomoxys calcitrans</i> / <i>Musca domestica</i>	●	●	●	●									
STABLE FLIES (larvae)		<i>Stomoxys calcitrans</i> / <i>Musca domestica</i>									●				
PALM WEEVILS		<i>Rhynchophorus ferrugineus</i> / <i>Rhynchophorus palmarum</i> <i>Rhynchophorus phoenicis</i>													●
HEAD LICE		<i>Pediculus humanus capitis</i>											●		
ENVIRONMENTAL PROTECTION														●	



Edificio INESBA
Polígono Industrial de la Pascualeta
Camino de la Pascualeta, 5
Apartado de correos, 6
46200 Paiporta - Valencia (Spain)

Tel +34 963 974 492
Fax +34 963 974 495
www.inesfly.com



Tel +233 302 228 422
P.O. Box KN 5574
Accra
Ghana, Africa
www.inesflyafrica.com